

LSAA 2010 Seminar Details and Sponsorship Package – Rev Sept 3 2010.



*The Lightweight Structures Association of Australasia in conjunction with Engineers Australia
Invite you to attend and Sponsor a Technical Seminar*



Design of Tension Membrane and Shade cloth Shade Structures

Thursday October 21st 2010 from 10.00am – 5.00pm

Brisbane RiverView Hotel

Corner Kingsford Smith Drive & Hunt St, Hamilton QLD 4007 Australia

Seminar Details

Tensioned membrane structures have become an important structural form for both large span roof structures as well as for smaller covered areas which also serve as an architectural statement. This seminar is an opportunity to learn about the basic structural design parameters, material selection, fabrication and erection techniques.

A particular focus of the seminar will be design factors, fabrication details, shade prediction and maintenance of smaller shade structures made from knitted porous shade-cloth with applications to providing shade to schools, playgrounds, car parking and storage, nurseries and domestic environments.

Topics which will be presented include:

- Brief history of tension membrane and shade cloth structures and modern architectural fabric materials
- Understanding the engineering design process and the nature of structural supports, edge and attachment details
- Fabrication, construction, installation and maintenance processes
- Particular issues (fire, shade prediction, legal, costing, vandalism, access etc) pertaining to shade cloth structures.

Speakers: A number of speakers drawn from LSAA and industry leaders with extensive experience in shade structures. A Certificate of Attendance and Seminar Proceedings will be available for attendees and should count towards the relevant CPD requirements.

Preliminary Program

10.00	Registration, Coffee & Networking with Sponsors
10.30	Welcome and Introduction (scope of Symposium etc)
10.40	Brief History of Tension Fabric and Shade Structures in Australia
11.00	Solid Fabric and Shade Cloth Materials including threads – Engineering and Other Properties
11.30	Engineering Design Factors and Importance of the Support Structures, panel edge and corner attachment details
12.00	The Good, the Bad and the Ugly Examples in Practice highlighting Structural Issues
12.45	Buffet Lunch in exhibition area & possible demonstration
13.45	Fabrication, Installation, Maintenance and other Issues of Shade cloth Structures
14.30	Two Case Studies – Solid PVC and Shade cloth solutions for a client brief. Elaboration of concept development and implementation
15.30	Afternoon Tea break
16.00	Draft Design Guidelines and Commentary on Specific Factors for Shade Cloth structures in Australia – in conjunction with a panel discussion.
16.50	Summary and Closure

Sponsorship Details

The Symposium is focused on Tension Membrane Structures with particular emphasis on Shade Structures constructed from knitted shade cloth. These latter structures find application in schools and other playgrounds as well as in domestic applications.

Sponsorship would be of interest to those companies who operate in these areas and might include architectural fabric suppliers, shade cloth manufacturers and distributors, webbing and edge cable suppliers, sewing and seaming equipment suppliers. It may also be of interest to certain software companies for form-finding, 3D modelling and shade prediction software.

Sponsorship of the LSAA 2010 Seminar will provide participating organizations with the opportunity to:

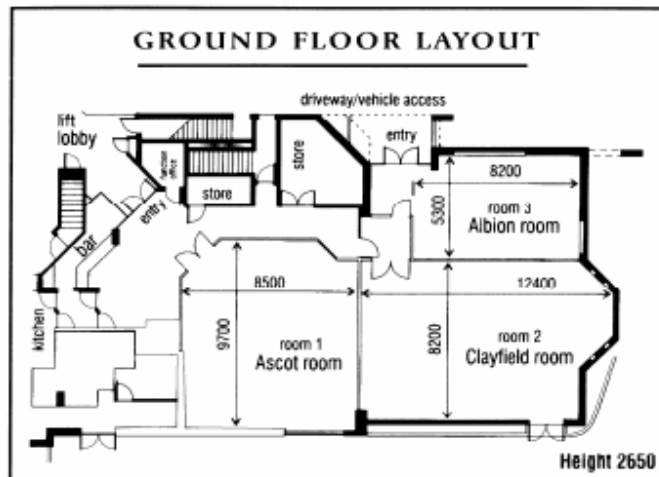
- Increase the awareness of their services and products amongst designers, specifiers and contractors.
- Promote services and products to an audience that is influential in the market and be seen as a supporter of the Australasian building industry in an area that is growing and has considerable potential for the export of services and products.

The Symposium is being held at the Brisbane RiverView Hotel and we have booked all three rooms (Albion, Ascot and Clayfield) as shown below. The Sponsors displays, lectures and presentations, morning and afternoon teas are all in the one area and ample time has been made for networking opportunities throughout the day.

Access for sponsors is from 9am and the Seminar starts with a 10am Registration and morning tea in the same area as sponsors exhibits (banners, possible machines – sewing, plotting / cutters, computers). This will provide an excellent opportunity for networking before the official welcome.

Owing to the length of the Symposium, no booths, panelling or tables will be provided. Sponsors should look to having portable self supporting banners and tables. It is expected that a single fold up table will be available for each sponsor (provided by the Hotel). The approximate floor space available for each sponsor is 2.4m wide and 2m deep located around the perimeter of the space. Locations are to be allocated in order of receipt of payment.

LSAA 2010 Seminar Details and Sponsorship Package – Rev Sept 3 2010.



Each sponsorship package is \$500 for LSAA Financial Members or \$650 for non-members, payable in advance (closing date is September 17th 2010).

Sponsors will be able to include some printed material or fabric samples with the Symposium satchels to be given to each attendee as well as distribute material from their stands. Electronic documents (PDF) less than 5Mb in size can also be made available on the LSAA website for attendees to access using a supplied password.

Sponsors logos and links to their website will be included in publicity material and articles on the LSAA Website.

The Sponsorship packages include one seminar registration but does not include any accommodation.

Sponsorship Application Form

Application for a Sponsorship Package for the LSAA seminar on **21st October, 2010**

Note: Any Accommodation Bookings to be done directly

Applicant Name: _____ Mobile: _____

Firm's Name: _____ Phone: _____

Address: _____

Fax: _____ email: _____

Website: _____

Cheques (Made out to "LSAA") Amount: _____ Bank: BSB: _____ Acc #: _____

Direct Deposit Details: Date: _____ Amount: _____ Reference: _____

LSAA Member? YES (Fee \$500) / NO (Fee \$650)

RSVP by Sept 8 with payment by Sept 17, 2010, to Peter Kneen, LSAA, 18A Freeman Ave, Oatley NSW 2223

LSAA Bank Details (for direct deposit, email details):

ANZ, Account: Lightweight Structures Association of Australasia, BSB: 013 267, Account: 3524 14135

Email: sponsorship@LSAA.org